

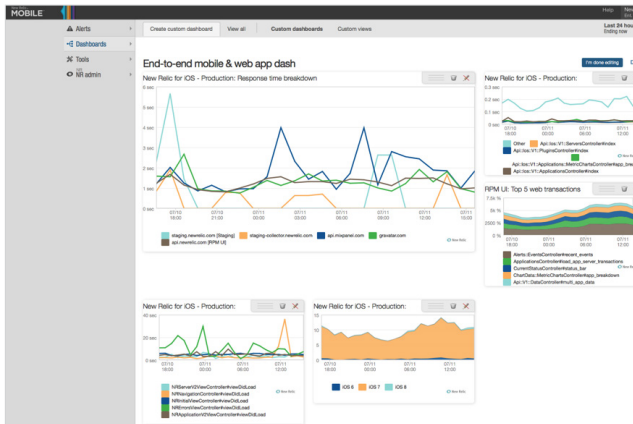
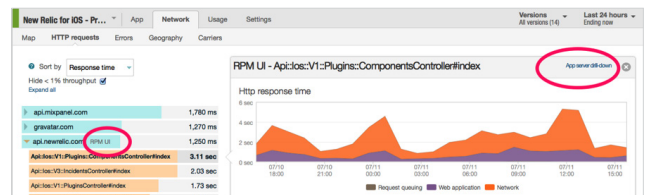


10 Best Practices for Customers on a New Relic Mobile Trial

- 1 Reference the [New Relic Mobile Getting Started Guide](#) for helpful tips and tricks on how to use the product.
- 2 Be sure to deploy the SDKs **in a test environment first** across multiple mobile and web apps. This includes deploying free hardware (server) monitoring as well as any relevant plug-ins and accessing [New Relic Insights](#). Make sure to **use the latest SDK version**:
 -  [iOS Releases](#)
 -  [Android Releases](#)
- 3 **Deploy to production** once you have tested the mobile SDK. Even more powerful, **real end-user data** available.
- 4 **Create custom dashboards** – you can pull graphs from New Relic APM, Mobile, Servers, Platform and monitor end-to-end systems.



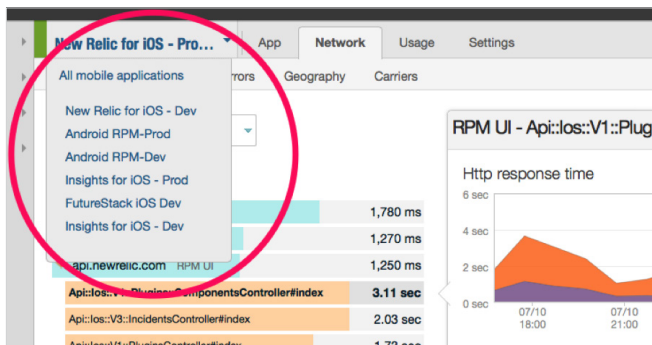
- 5 Check out the **“App Server Drill Down” Cross Application Tracing** from your mobile app to your backend server environment. You can spot these under the mobile app map or under HTTP Requests. If the API has a name next to it, that means Cross Tracing is available.



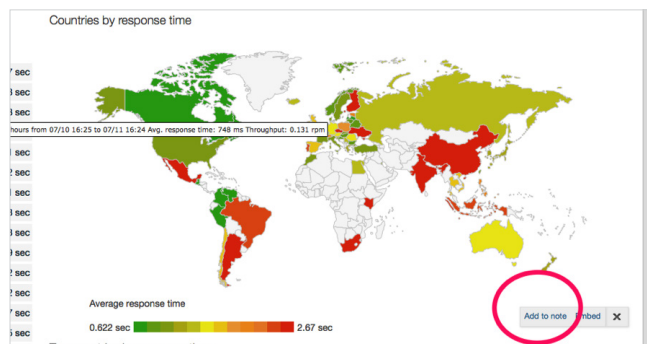
- 6 Be sure to **drill into Interaction Traces** and find some inefficiencies within your mobile app code.
 - Are network requests running serially instead of parallel?
 - Are there database or image requests on the main/UI thread that can be pushed to worker/background threads?
 - Are there spikes in memory/CPU usage?
 - Do you have advertisements running on your app? Are they running on the main thread or background threads? Optimal practice is to have them run on the background threads



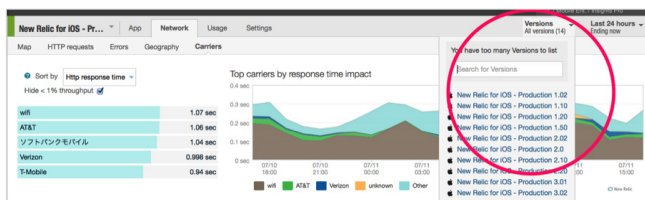
7 Toggle among all of the mobile apps you have plugged in while staying on whichever view you like (monthly uniques, versions, geo, carriers, device or OS comparisons).



8 Log into New Relic daily and collaborate with coworkers within the tool, use **embedded links, notes and custom dashboards** to accomplish this.



9 Toggle app version for any view in the dashboard and see how a particular version is performing.



10 Be sure to customize your mobile APM experience with the following two links to our documentation for iOS and Android:

 [iOS documentation](#)

 [Android documentation](#)

Please [share any and all feedback](#) with us. Our team is constantly working on improving your experience using New Relic Mobile including adding to our feature set and improving UI and existing features.